



2012 FORD ESCAPE

The 2012 Ford Escape is a more perfect form of SUV – one that delivers sporty performance and great fuel economy. If you're looking for power, there's plenty. The available 240-horsepower V6 engine allows Escape to pull a good-size boat when properly equipped. And if you're looking to go farther on less, the Escape four-cylinder engine also boasts impressive fuel mileage.



NEW AND NOTABLE

- Available 3.0-liter V6 produces 240 horsepower and offers flex-fuel (E85) capability
- Standard 2.5-liter four-cylinder engine produces 171 horsepower
- Escape continues to deliver a balance of off-road adventure and on-road fun
- Voice-activated Navigation System includes new HD Radio™ capability
- Customer-pleasing technology includes active park assist, rear view camera, MyKey® and SYNC® with Traffic, Directions and Information

MYKEY

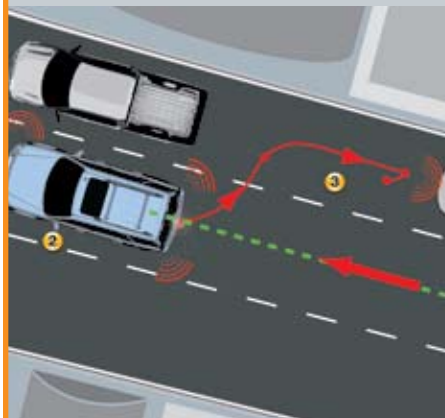
To help encourage safer teen driving, Escape comes standard with the Ford-exclusive MyKey® programmable vehicle key. Parents simply program the vehicle key through the message center to incorporate features such as:

- Limited top speed of 80 mph
- Traction control system that limits tire spin cannot be deactivated
- Audio system volume control limited to 44 percent of maximum volume
- Speed alert chime at 45, 55 or 65 mph



ACTIVE PARK ASSIST

The available class-exclusive active park assist system option uses sensors on the front and rear of the vehicle, working in conjunction with electric power-assisted steering (EPAS), to guide the vehicle into a parking space.



FUEL ECONOMY



2.5-liter four-cylinder: 23 mpg city/28 mpg highway (front-wheel drive, five-speed manual); 20 mpg city/26 mpg highway (four-wheel drive, six-speed automatic)

3.0-liter V6: 19 mpg city/25 mpg highway (front-wheel drive, six-speed automatic); 18 mpg city/23 mpg highway (four-wheel drive, six-speed automatic)

Did you know? 28 mpg highway for the four-cylinder is unsurpassed vs. Toyota Rav4 Limited and Honda CR-V EX-L

VITAL STATS

Engines: 2.5-liter Ti-VCT four-cylinder, 171 hp @ 6,000 rpm, 171 lb.-ft. torque at 4,500 rpm; 3.0-liter V6, 240 hp @ 6,550 rpm, 223 lb.-ft. torque @ 4,300 rpm

Transmissions: Five-speed manual, six-speed automatic

Series: XLS, XLT, Limited

Production location: Kansas City Assembly Plant, Claycomo, Mo.

MSRP: Starting at \$22,065

SAFETY/STANDARD



- AdvanceTrac® with RSC® (Roll Stability Control™)
- Safety Canopy® System, a side air curtain technology offering protection for the first and second seating rows
- Personal Safety System™, a suite of seven safety technologies, including dual-stage front airbags for the driver and front seat passenger, side airbags and a front passenger sensor system
- Integrated blind spot mirrors for better blind spot visibility
- MyKey programmable vehicle key
- Tire Pressure Monitoring System
- LATCH (Lower Anchors and Tether Anchors for Children)
- Head restraints and three-point safety belts on all five seating positions

For more information on the 2012 Ford Escape and other Ford Motor Company products and news, go to media.ford.com