



2011 FORD FUSION



The 2011 Ford Fusion offers even more technology and convenience features, all designed to appeal to customers looking for a fun-to-drive midsize sedan.

This year, new features include MyKey®, available rain-sensing wipers and HD Radio™. Integrated blind spot mirrors have been added to cars without the optional BLIS® (Blind Spot Information System) with cross-traffic alert feature. The award-winning Ford SYNC® communications and infotainment system now can be integrated with the available touch-screen voice-activated Navigation System.

The 2011 Fusion features an all six-speed transmission lineup, including an available six-speed manual or automatic transmission backing the I-4 engine. New this year, I-4 automatic models are available with SelectShift Automatic™ (transmission) manual gear control via a gear selector up/down button.

Front-wheel drive and on-demand all-wheel drive are available on Fusion models with a 3.0-liter V6 engine and with the Fusion Sport 3.5-liter engine. Both V6 engines come standard with SelectShift for individual gear control. The versatility in the powertrain systems creates a wide range of options designed to fit every need.

EPAS

The 2011 Fusion is equipped with advanced electric power-assisted steering (EPAS) providing responsive road feel and enhanced on-center balance while offering the additional benefit of increased fuel economy. EPAS also reduces the load on the engine since a belt-driven power steering pump is no longer required. Fusion's front anti-roll bar and rear suspension link geometry help ensure confident steering, handling and ride. The suspension elements have been tuned to take full advantage of EPAS.



FUSION SPORT

With its even sportier look, larger, more powerful engine, aggressive 18-inch wheels and upgraded suspension tuning, the new 2011 Ford Fusion Sport is a dynamic addition to the lineup.

The 3.5-liter V6 engine is mated to a SelectShift Automatic (transmission). Front-wheel drive is standard, all-wheel drive is available. The sport-tuned air intake system provides an assertive growl that complements the driving experience.

For 2011, the Fusion Sport also features a unique lower grille for a functional look, large beveled bright-tip dual exhausts, side rocker moldings, a decklid spoiler and unique Sport badging. Eighteen-inch painted aluminum wheels are standard.

SAFETY/STANDARD

- AdvanceTrac® electronic stability control
- Dual front airbags, front seat-mounted side airbags and side air curtains
- Personal Safety System™
- Tire Pressure Monitoring System
- SOS Post-Crash Alert System™ that flashes signal lights and sounds horn in the event of an accident
- LATCH (Lower Anchors and Tether Anchors for CHildren)



VITAL STATS

Powertrains: 2.5-liter I-4 six-speed automatic, 175 hp @ 6,000 rpm, 172 lb.-ft. torque @ 4,500 rpm

Series: S, SE, SEL; Sport

Fuel economy: 23 mpg city/33 mpg highway

Production location: Hermosillo Stamping and Assembly Plant, Hermosillo, Mexico

MSRP: Starting at \$20,420



2011 FORD FUSION HYBRID



The popular Fusion Hybrid continues its reign as America's most fuel-efficient midsize sedan.

The Fusion Hybrid uses a powertrain system that combines the best attributes of the gasoline engine and electric battery-driven motors to deliver an optimal experience for the customer in terms of driving performance and fuel economy. The propulsion system transitions between gas and electric power efficiently and seamlessly.

Ford Fusion Hybrid can operate up to 47 mph in pure electric mode, approximately twice as fast as some competitors. Plus, the city driving range on a single tank of gas is more than 700 miles.



SAFETY/STANDARD

Standard safety features include:

- AdvanceTrac® electronic stability control
- Dual front airbags, front seat-mounted side airbags and side air curtains
- Personal Safety System™
- Tire Pressure Monitoring System
- SOS Post-Crash Alert System® that flashes signal lights and sounds horn in the event of an accident
- LATCH (Lower Anchors and Tether Anchors for CHildren)

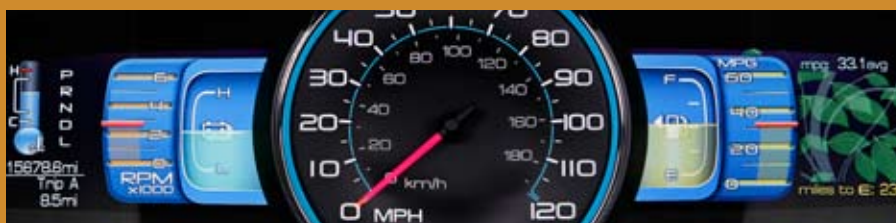


SMARTGAUGE

Ford offers drivers a way to be connected to the hybrid driving experience thanks to SmartGauge™ with EcoGuide, a unique instrument cluster execution that helps coach owners to optimize performance of their hybrid.

SmartGauge with EcoGuide features two high-resolution, full-color LCD screens on either side of the analog speedometer. They can be configured to show different levels of information, including fuel and battery power levels, and average and instant miles per gallon. EcoGuide uses a multilayered approach to coach the driver to maximum fuel efficiency.

A tutorial mode built into the display helps the driver learn about the instrument cluster and the Hybrid in a whimsical way that does not overpower. Technical enthusiasts love the detailed gauges that will help them learn to become more efficient in their driving. Everyday drivers love the system's efficiency leaves, a feature that "grows" leaves and vines on-screen to reward customers for efficient driving.



VITAL STATS

Powertrain: Gasoline engine: 2.5-liter DOHC 16-valve Atkinson cycle, 156 hp @ 6,000 rpm, 136 lb.-ft. torque @ 2,250 rpm; Electric motor: Permanent magnet AC synchronous motor, 40 hp, 275 volts max. Electronically Controlled Continuously Variable Transmission

Fuel economy: 36 mpg city/41 mpg highway

Production location: Hermosillo Stamping and Assembly Plant, Hermosillo, Mexico

MSRP: Starting at \$28,825